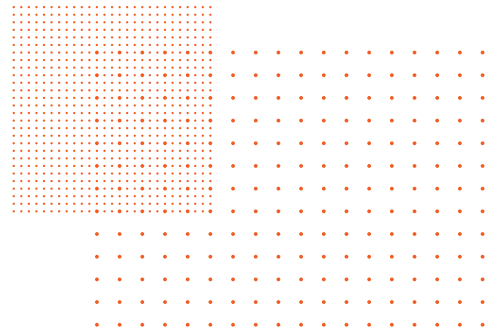
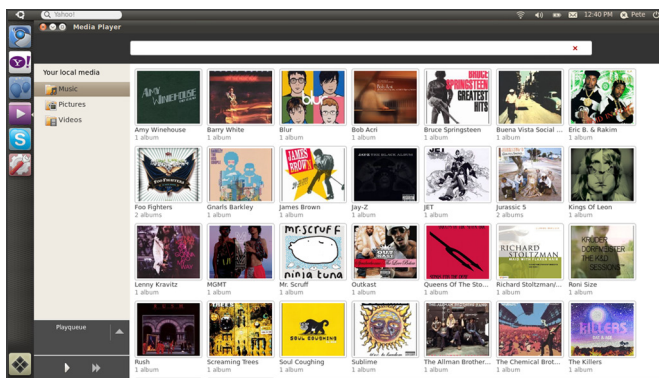


Ubuntu Light



What is Ubuntu Light?

Ubuntu Light is a simplified version of Ubuntu. It's perfect as a companion to Windows for a fast web experience or as a standalone operating system for use in mobile and embedded devices. Ubuntu Light includes a very targeted set of applications and is optimised for a fast startup time and a fast connection to the Internet. Typical startup times are eight seconds on a device with a solid state disk drive (SSD) and 15 seconds on a device with a hard disk drive (HDD)¹.



Ubuntu Light Media Player

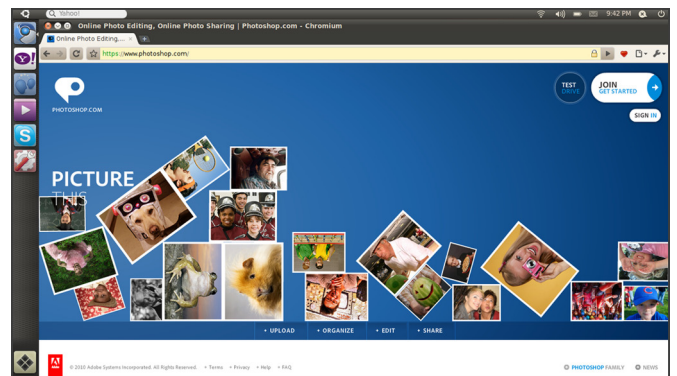
Ubuntu Light is the implementation of the new Unity-based interface, developed by Canonical, to create a consistent user experience across devices. Though the application set is limited, the functionality is not. Ubuntu Light will integrate with any peripheral devices supported by Ubuntu. In a connected device, security is paramount. That's why Ubuntu Light also supports updates to any part of the system without the need to update everything. In a dual-boot configuration, Ubuntu Light is enabled or disabled from the Windows Control Panel, and preserves Windows as the primary operating system during the initial out-of-box experience.

Why work with Canonical?

Canonical has a proven track record of working with the top original equipment manufacturers (OEMs) and original design manufacturers (ODMs) to deliver Ubuntu-based devices to the market. A solution from Canonical delivers both a quality product and maintenance to ensure a safe and secure experience for your customers for the life of the product.

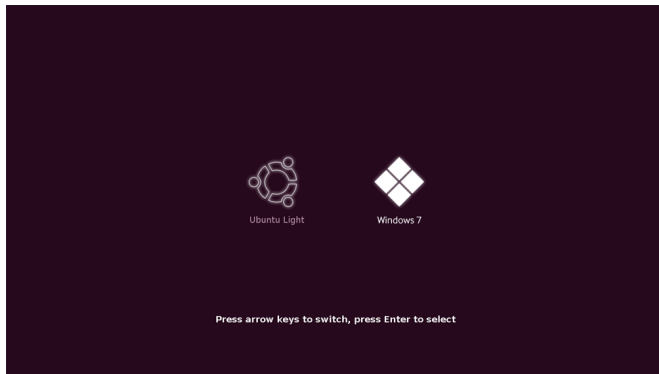
Reasons to choose Ubuntu Light

- Optimised for speed – gets users online as fast as possible.
- Small operating system footprint – fits within 4GB with room for additional storage.
- Integration with Windows – offers access to the same content as in Windows and can be quickly enabled or disabled from the Windows 7 Control Panel.
- Maintenance and security – can update individual components or the whole system.
- Elegant simplicity – a simplified yet functional desktop from the Linux desktop leaders.

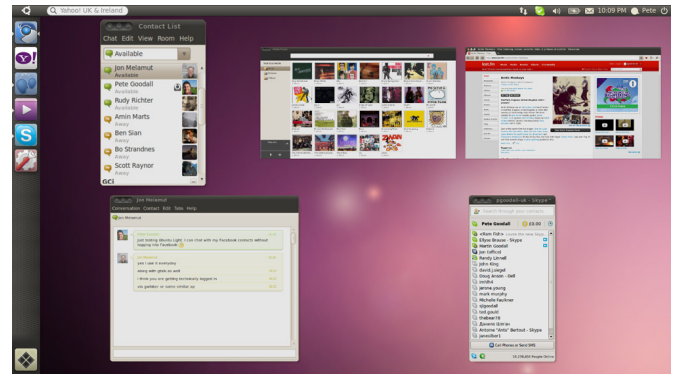


Chromium browser in Ubuntu Light displaying Photoshop.com

Technical specifications		
Minimum hardware requirements:	Open-source applications included:	Languages included:
Processor: Intel or AMD processor	Web browser: Chromium	English
RAM: 512 MB	Instant messenger: Empathy	Portugese
Storage: 4 GB solid state drive or hard disk drive	Media Player: Moblin Media Player ²	French
Graphics: capable of hardware accelerated graphics		Italian
	Optional licensed audio and video decoders:	German
Market-leading applications included:	MPEG4 (H.263), VC-1	Spanish
Skype	MP3	Chinese Simplified
Adobe Flash	AAC	Chinese Traditional
	Windows Media	Japanese
	Real Media ³	Korean



Ubuntu Light – Choose your experience at startup



Ubuntu Light – All your running applications with one click

How do I find out more?

To find out if Ubuntu Light is right for your organisation, please contact:

South East Asia	Central Asia	China
Kevin Huang	Prakash Advani	Richard Yu
kevin.huang@canonical.com	prakash.advani@canonical.com	richard.yu@canonical.com
Latin America	Europe	North America
Fabio Filho	Vladimir Kryukov	Ken Edwards
fabio.filho@canonical.com	vladimir.kryukov@canonical.com	kenneth.edwards@canonical.com
Email: oem@canonical.com		

¹ Startup times are post BIOS. Assumes a rotational speed of 7200 rpm for hard disk drives.

² Play audio and video content, view images

³ Requires Real Player